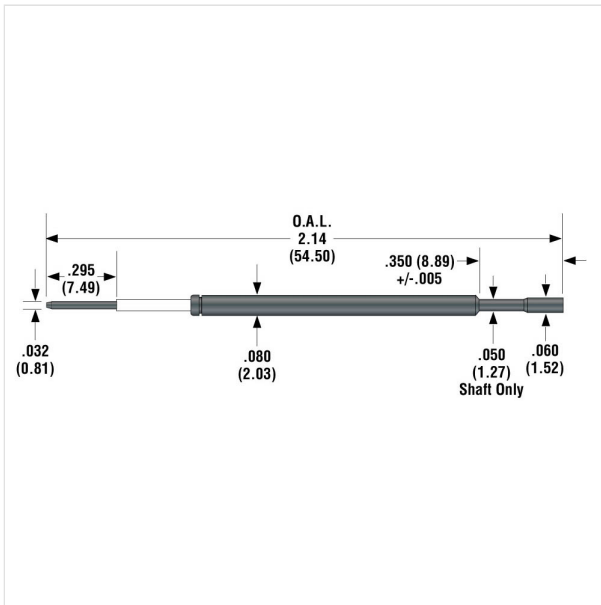


MSP-3C

Product Family: MSP



Springs

Force Type - Preload in oz (g) - Rec. Travel in oz (g) -

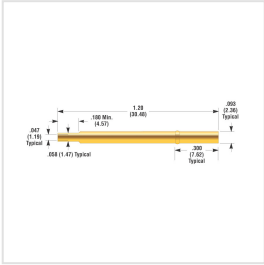
Spring Material

Standard - 4.10 (116.00) - 6.50 (184.00) -

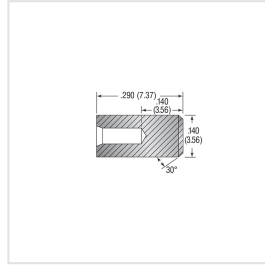
Alternate - 17.00 (482.00) - 35.00 (992.00) -

Related Products:

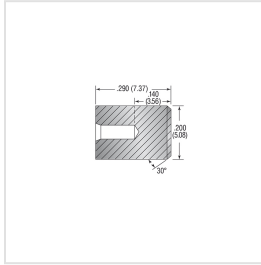
SPR-3W



PE-1



PE-2



PE-3

